

HE2XX Temperature and Humidity Transmitter

*Features:

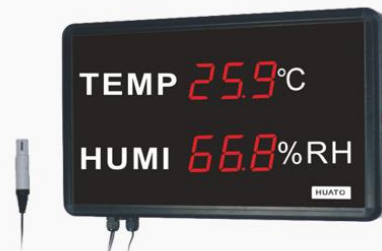
- ● Adopt imported temperature and humidity integrated sensor with high accuracy and stability.
- ● Measure temperature and humidity with external sensors.
- ● Key deviation calibration function.
- ● Large LCD display temperature ,humidity and time simultaneously.
- ● 100-240VA power supply and wall-mounted design.

*Thermometer Hygrometer Model

HE212A



HE218A



HE250A



HE218B



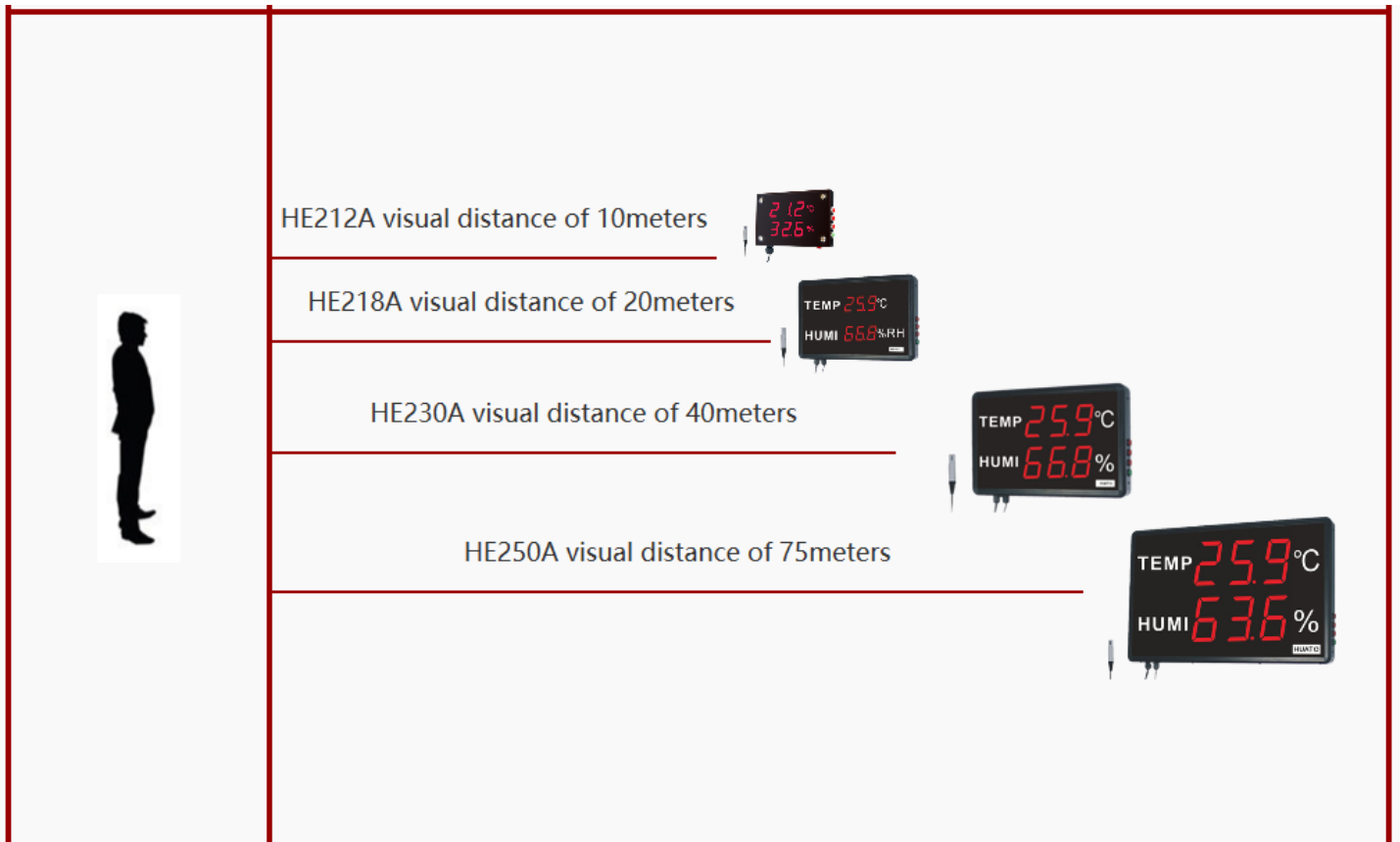
HE230T



HE223H



LED Display Thermometer Hygrometer								
Model	HE212A	HE218A	HE230A	HE250A	HE218B	HE223H	HE230T	
LED size(Inch)	1.2"	1.8"	3.0"	5.0"	1.8"	3.0"	3.0"	
Visual range	10M	20M	40M	75M	20M	40M	40M	
Temperature range	-40°C~+85°C						-100°C~+100°C	
Humidity range	0~100%RH						Non	
Temperature accuracy	±0.5°C						±0.5°C	
Humidity accuracy	±0.5%RH						±0.5%RH	
Sensor type	External 2meters	External sensor with 1.5 or 3 meters cable					PT100 sensor	
N.W.(KG)	0.7	2.3		5.38			2.3	
Dimension(CM)	17*11.5*3.3	39.5*25.5*5		60.1*38.3*5			36*17.7*8.5	
Packing size	24*20*6.6	46*31.5*8.5		66.4*43.3*8.5			46*31.5*10	
Standard accessories	Operation manual							

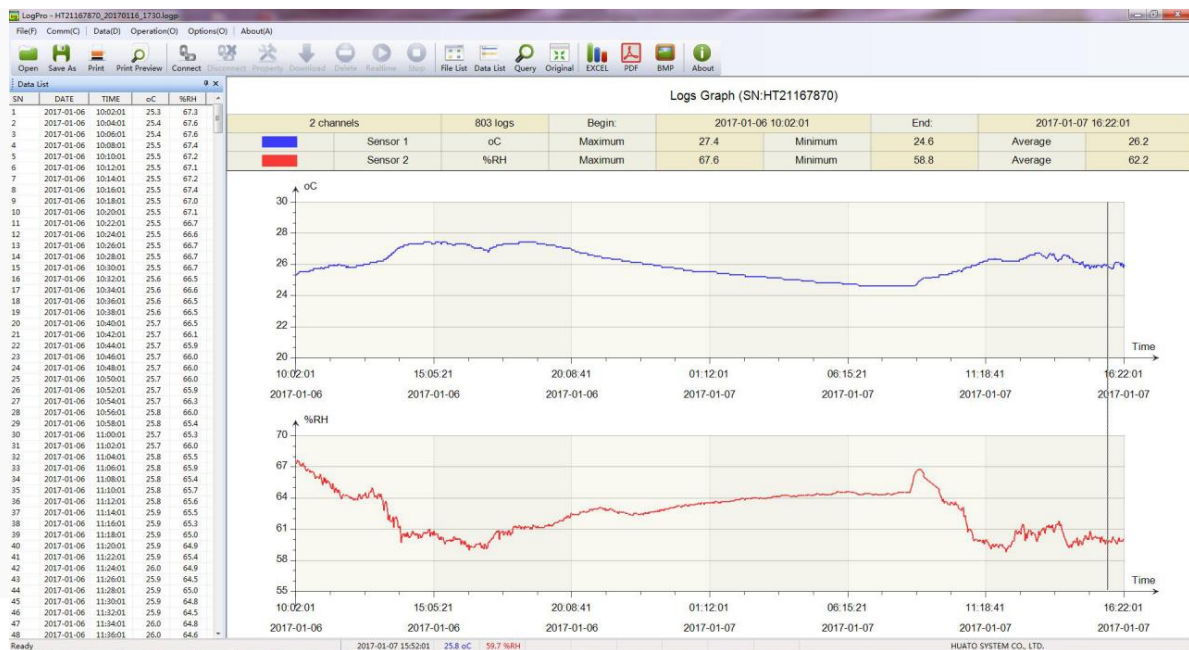


Temperature Humidity Data Logger Model

LED Display Temperature Humidity Data Logger			
Model	HE223C	HE250C	HE218C
LED size(Inch)	2.3"	5.0"	1.8"
Visual range	30M	75M	30M
Temperature range	-40°C~+85°C		
Humidity range	0~100%RH		
Temperature accuracy	±0.5°C		
Humidity accuracy	±0.5%RH		
Sensor type	External sensor with 3 meters cable		
N.W.(KG)	2.3	5.38	5.38
Dimension(CM)	39.5*25.5*5	60.1*38.3*5	60.1*38.3*5
Packing size	41*31.5*8.5	66.4*43.5*8.5	66.4*43.3*8.5
Standard accessories	LogPro Software,operation manual		

LogPro Software

- ◆ The device can be set up by connecting the data line and the computer.
- ◆ The data recorded in the instrument can be downloaded and stored in the database.
- ◆ According to customer requirements specified in the specific time period of the instrument recorded data.
- ◆ Data can be saved as PDF, EXCEL, BMP and other formats.
- ◆ Can be used to view the list of files and data files.



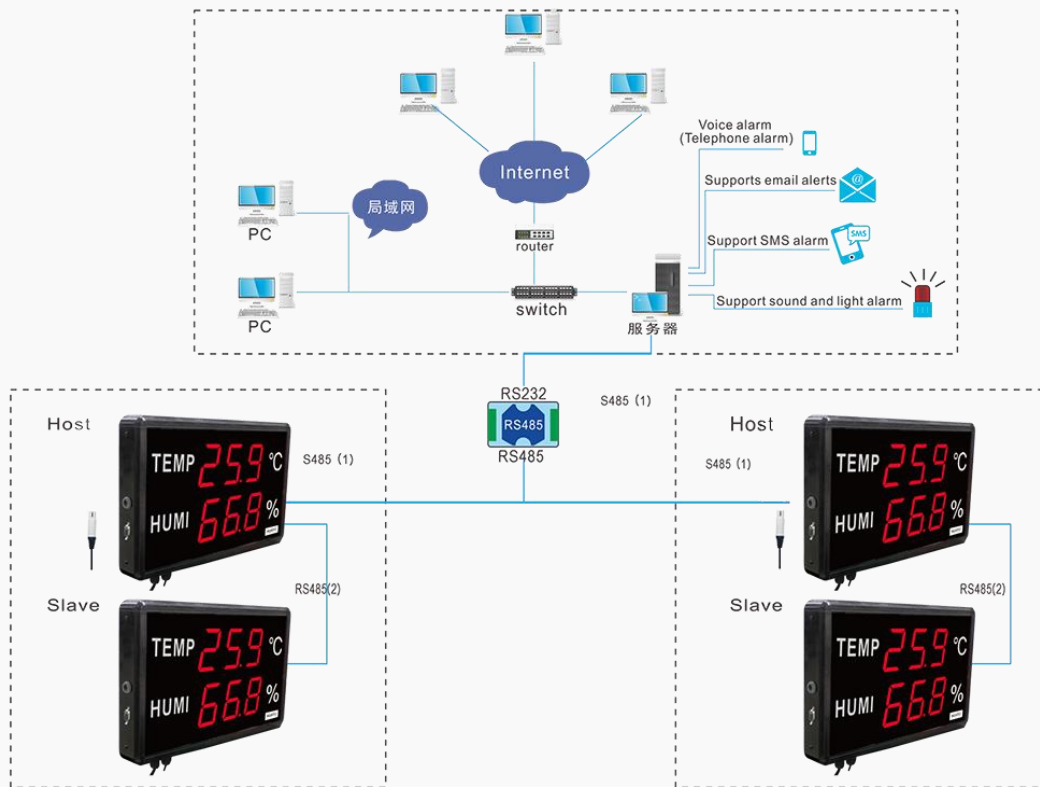
*Large LED Real-Time Monitor Solution

LED Display Monitor System Model			
Model	HE223C-RS485	HE250C-RS485	HE218B-RS485
Model	HE223C-RJ45	HE250C-RJ45	HE218B-RJ45
LED size(Inch)	2.3"	5.0"	2.8"
Visual range	30M	75M	30M
Temperature range	-40°C~+85°C		
Humidity range	0~100%RH		
Temperature accuracy	±0.5°C		
Humidity accuracy	±0.5%RH		
Sensor type	External sensor with 3 meters cable		
N.W.(KG)	2.3	5.38	5.38
Dimension(CM)	39.5*25.5*5	60.1*38.3*5	60.1*38.3*5
Packing size	41*31.5*8.5	66.4*43.5*8.5	66.4*43.3*8.5
Standard accessories	LogPro Software,operation manual		



RS485 Real Time Monitor System Network Topology Map

RS485 network topology

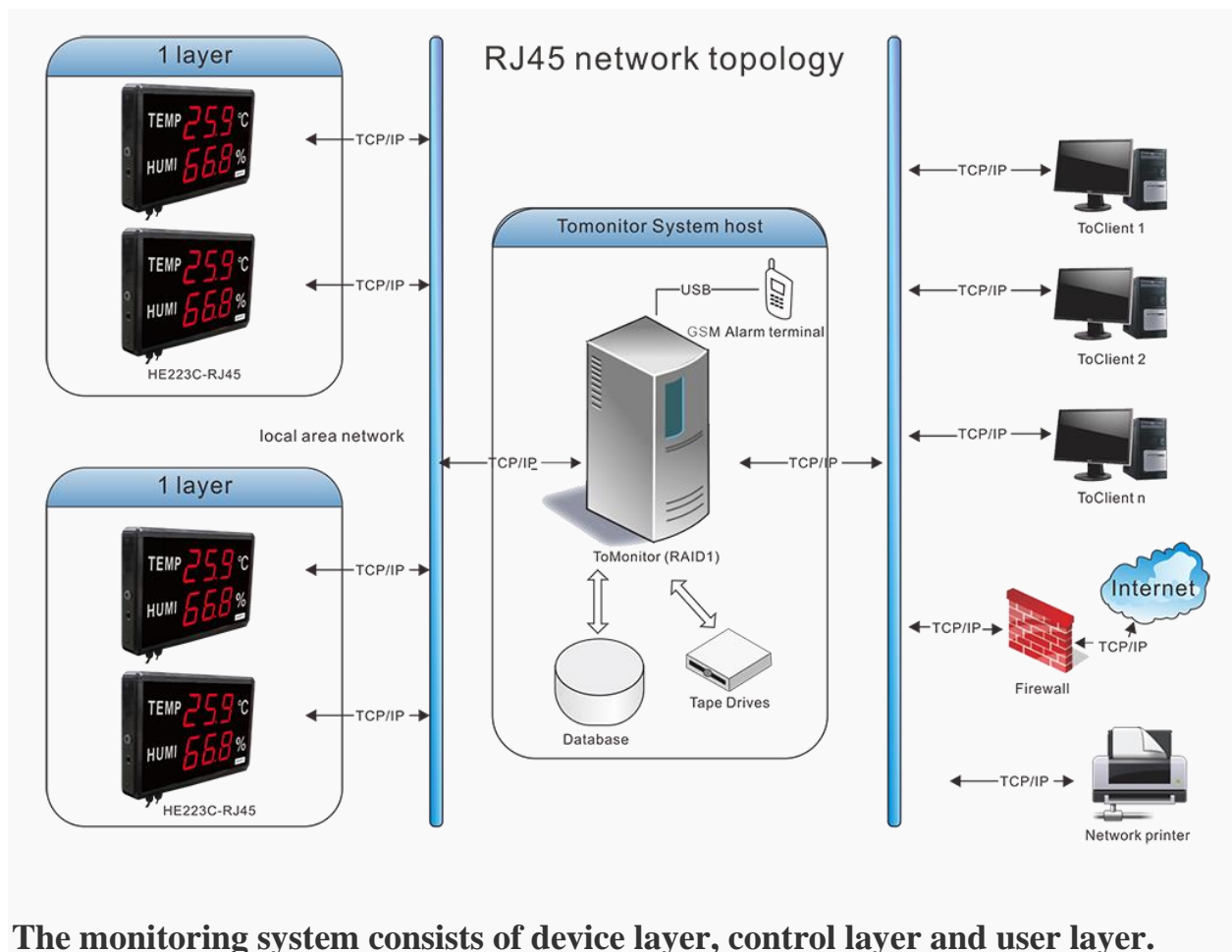


RS485 network is a major net industrial network, which is characterized by simple and convenient operation, mature technology, high reliability and economic benefits, which has been widely used.

The ToMonitor system adopts RS485 communication protocol to realize real-time monitoring of temperature and humidity data acquisition of the monitoring points, when any one of the temperature and humidity exceed the standard, system server, customer end users and send alarm, mail alarm, SMS alarm, alarm; support external display; client query; remote centralized management; analysis of the powerful the data of the software.



RJ45 Real Time Monitor System Network Topology Map



The monitoring system consists of device layer, control layer and user layer.

- ◆ User layer: including User Company any internal networking computer, install the ToClient client software, you can view the current real-time running state or historical data. Working principle: all data are stored in the control layer (control server) database, the user can only through the local area network (or Internet) to query the historical data or view real-time data. ToClient client software to receive the server sent over the real-time data, it will be judged, if the temperature and humidity data over the set of the upper and lower limits, ToClient software will play alarm sound. The user can query the system according to the authority.
- ◆ Control layer: high performance PC server running ToMonitor monitoring software, the serial server report data written into the SQL database in real time. For more than a predetermined set of upper and lower limits of the recorder, send the appropriate alarm information to the administrator.
- ◆ Equipment layer: all high precision network recorder can automatically record the temperature and humidity data, and forwarded to the ToMonitor software system through the network. Even if the server is not started or the line is broken, the recorder can record the data automatically, and the data loss will not occur.

Service ToMonitor software

- ◆ ToMonitor is the server software can receive the data uploaded recorder and displayed on the interface of the software, you can set the temperature and humidity range of each device in the ToMonitor, once the temperature or the humidity value exceeds the set range, the system will give an alarm.
- ◆ ToMonitor is the server software can receive the data uploaded recorder and displayed on the interface of the software, you can set the temperature and humidity range of each device in the ToMonitor, once the temperature or the humidity value exceeds the set range, the system will give an alarm.
- ◆ The system supports RJ45, GPRS, RS485, USB and other relay hybrid access, can be very strong.
- ◆ ToMonitor system supports multi-threaded processing, make full use of multi-core CPU performance, increase the throughput of the system. Send the alarm, the system will not affect the data received.



Client software

- ◆ ToClient is the client query software, the user can access the server through the ToClient client, query the historical data uploaded by the recorder.
- ◆ The system uses the client / server architecture to support the internal LAN access, users do not have room to guide the data.
- ◆ Equipment / relay network, without manual intervention, the new equipment is simple and convenient.
- ◆ The transmission data is encrypted to prevent leakage.

- ◆ To provide real-time data display and graphical display of the curve, the user can view real-time monitoring data.



*Applications

It has been widely applied in medical field, warehouse, Electronic factory work shop, office, lab, agricultural industry, museum, Public Security Bureau interrogation room, home, office space, hotels, restaurants, schools, conference rooms, shopping malls, waiting rooms, hospitals, greenhouse nurseries, livestock breeding and other indoor environment, etc.