

#4 JUMBO CONTOUR MARKER



Developed for use in the layout of large diameter pipe, from 8" to 48" and structural seal joints, of the same size pipe. Comes complete with a durable web strap (included) to help hold the unit in place during layout. Built-in adjustable dial set level (DSL) ensures accurate center-line location. A soapstone crayon is included.

#4 JUMBO CONTOUR MARKER

3001877 [0721-0003]

COMBO ADAPTOR ACCESSORY

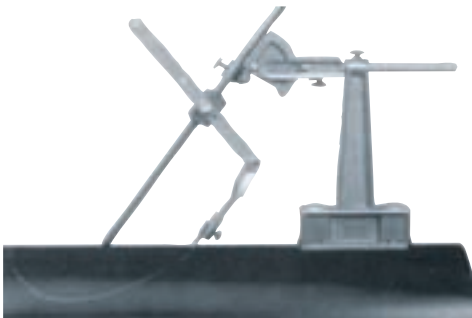


Designed for use with the Standard and Jumbo Contour Markers, the adaptor simplifies handling and increases layout flexibility. Permits use of all four sides of the Contour Marker and allows marking on small diameter pipe, over nipples, old weld or on wrapped pipe. Also provides layouts with compound angles. Using a single setting, or any degree of take-off on elbows and turns up to 90°.

#2 STANDARD
#5 JUMBO

3001875 [0721-0003]
3001878 [0721-0004]

#14 CIRCLE ELLIPSE PROJECTOR



Ideal for creating perfect circles, ellipses or oblong circles on any irregular flat or round surface. Can be used to lay out lateral intersections of different diameter pipes, or to project circles from 1-1/2" to 18" diameter on flat surfaces intersecting at angles from 0 to 70° from vertical. Features a protractor with sliding rod and an adjustable lever to lock in the specified layout. Strong, 20-pound pull magnetic base holds the Projector in position during layout. Durable web strap (included) holds the unit secure on non-magnetic surfaces and can be used on either side of the vertical column. The Projector is equipped with a soapstone crayon and also works with chalk, pencil or steel scribe.

#14 CIRCLE ELLIPSE PROJECTOR

3001888 [0721-0014]

CENTERING HEAD



Aids in the setting of center lines, establishing angles and marks for butt-ins, locating points inside pipes and tanks, laying out keyways and measuring declivity. Standard Model is used on pipe 1/2" diameter and larger and has a 4" Y-type head fitted with an adjustable dial set level (DSL) and a manually operated hardened centering pin. Jumbo Centering Head is ideal for pipe 1" diameter and up and has an 8" Y-type head and a DSL. A spring-loaded hardened centering pin eliminates the need for a hammer.

#6 STANDARD
#7 JUMBO

3001879 [0721-0005]
3001880 [0721-0006]